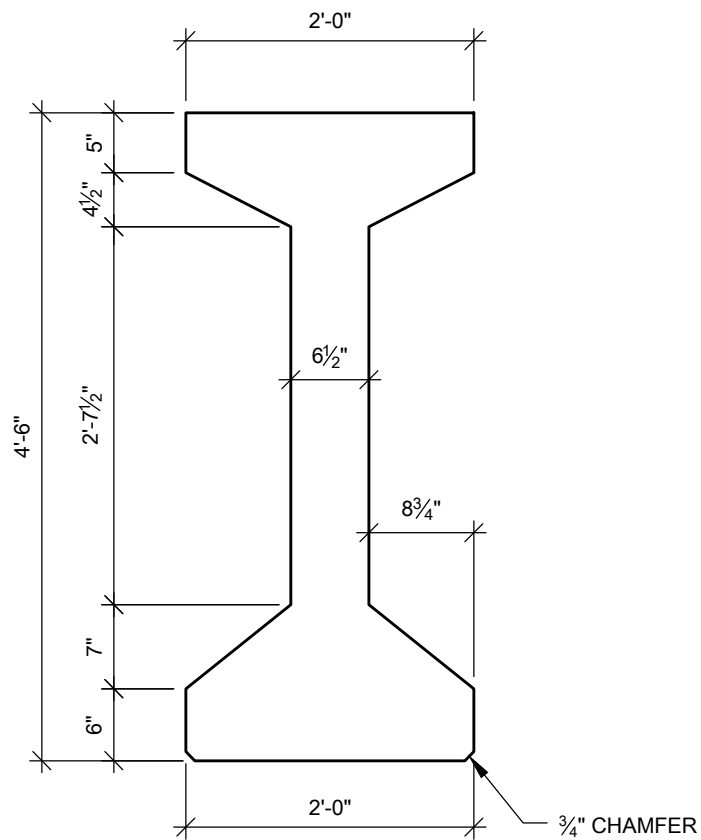


# PRESTRESSED CONCRETE CONSTRUCTION



P.O. Box 311 - Newton, Kansas 67114  
Phone: 316-283-2277 Fax: 316-283-2321  
[www.preconc.com](http://www.preconc.com)

## K4 GIRDER - ALL LOADINGS SPAN RANGE TO APPROX 105'



### SECTION PROPERTIES

WT = 671 plf  
A = 644 in<sup>2</sup>  
I = 236,105 in<sup>4</sup>  
Yb = 25.89 in  
Sb = 9,120 in<sup>3</sup>  
St = 8,399 in<sup>3</sup>